

# LOWER ST. ANTHONY FALLS AND LOCK AND DAM 1 DISPOSITION STUDY

Mississippi Managers Meeting  
February 7, 2023

U.S. Army Corps of Engineers  
St. Paul District  
332 Minnesota Street, Suite E1500  
St. Paul, MN



US Army Corps  
of Engineers®





# CURRENT STAGE SCOPING



- The scoping process is the best time to identify issues, determine points of contact, establish project schedules, and provide recommendations to the Corps.
- The overall goal is to define the scope of issues to be addressed in depth in the analyses that will be included in the Environmental Assessment.



# OVERVIEW



To facilitate water-borne commercial navigation Congress directed the construction of Lock and Dam 1 in 1917, Lower St. Anthony Falls Lock and Dam in 1956, and Upper St. Anthony Falls in 1963.

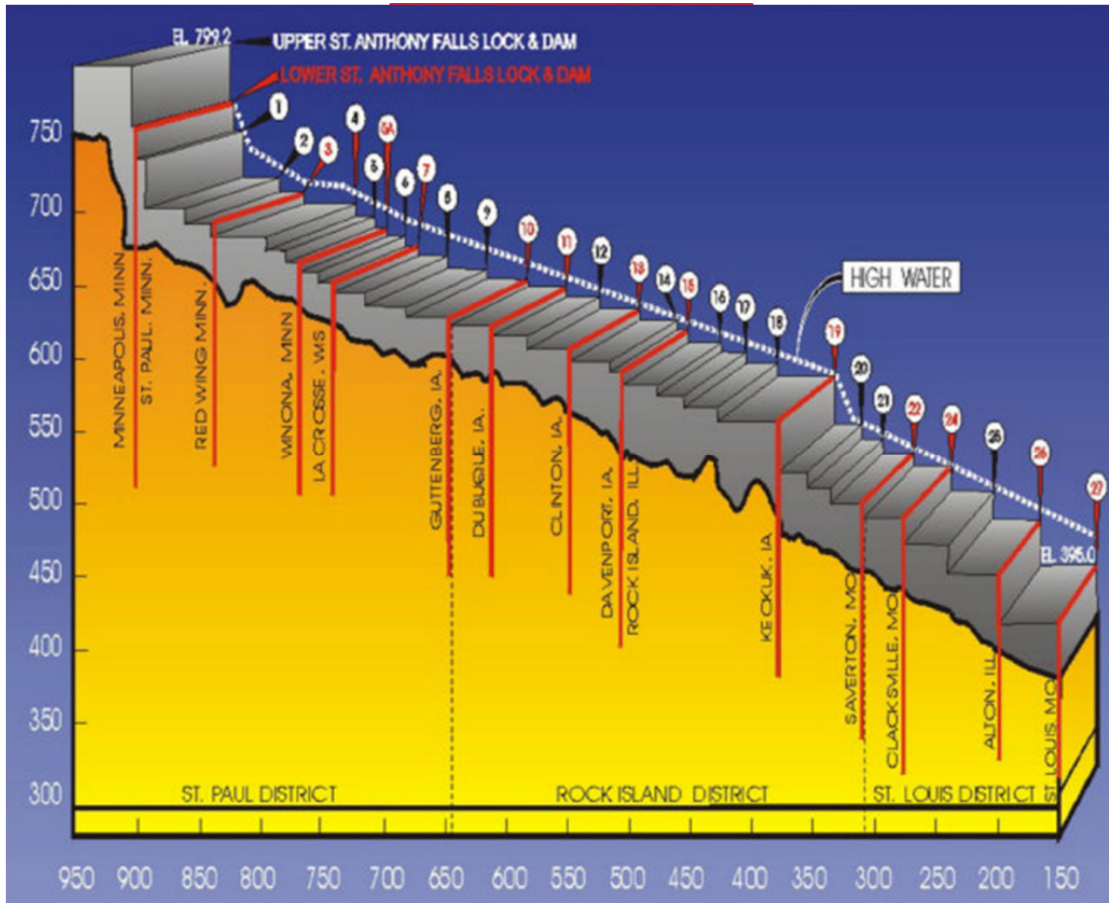
The U.S. Army Corps of Engineers built these three lock projects and continues to operate and maintain them today.

★ *This study is focused on Lower St. Anthony Falls & Lock and Dam 1*





# WHY UPPER MISSISSIPPI LOCKS AND DAMS?



Upper St. Anthony Falls  
~ 49' drop

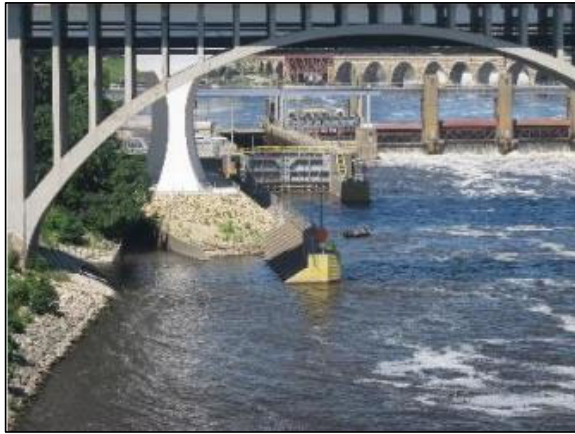
Lower St. Anthony Falls  
~ 25' drop

Lock and Dam 1  
~ 36-38' drop (depending  
upon inflatable crest).





# OVERVIEW



**Lower St. Anthony Falls lock and dam (LSAF)**

Primary Purpose:

- Navigation

Secondary Purpose:

- Recreation

Also supports:

- 9 MW Hydropower



**Lock and Dam No. 1 (L/D 1)**

Primary Purpose:

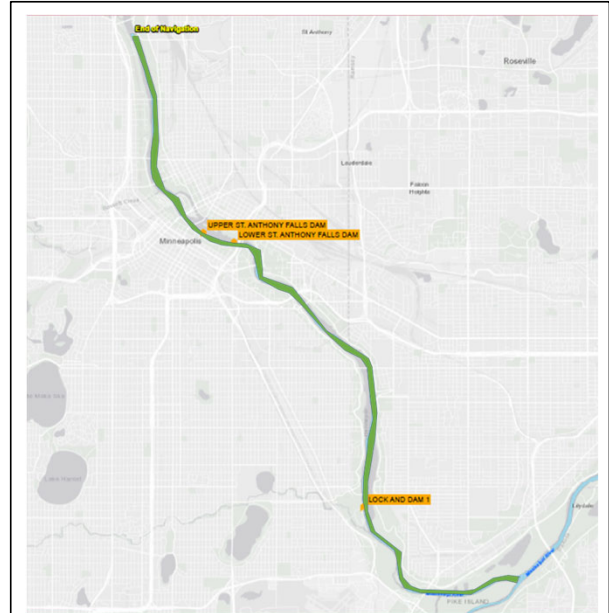
- Navigation

Secondary Purpose:

- Recreation

Also supports:

- 14.4 MW Hydropower



**Navigation Channel**

Primary Purpose:

- Navigation

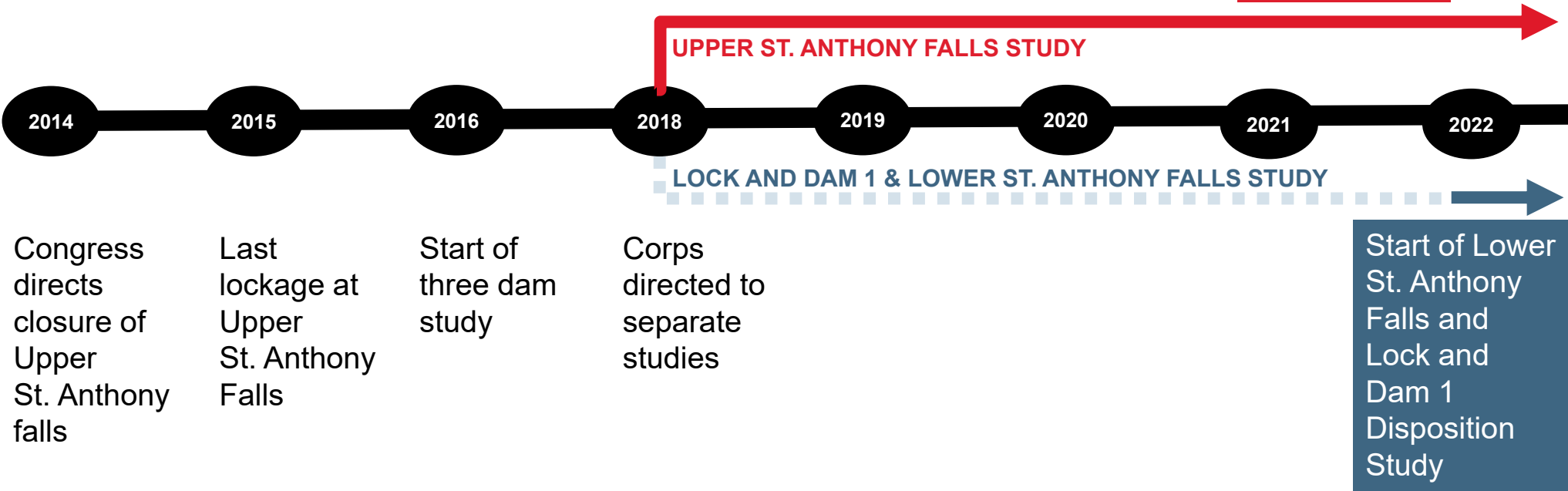


# DISPOSITION STUDY BACKGROUND



Congress directs conveyance of land surrounding the Upper St. Anthony Falls to Minneapolis

Draft disposition study and proposed disposal of Upper St. Anthony Falls Lock and Dam published





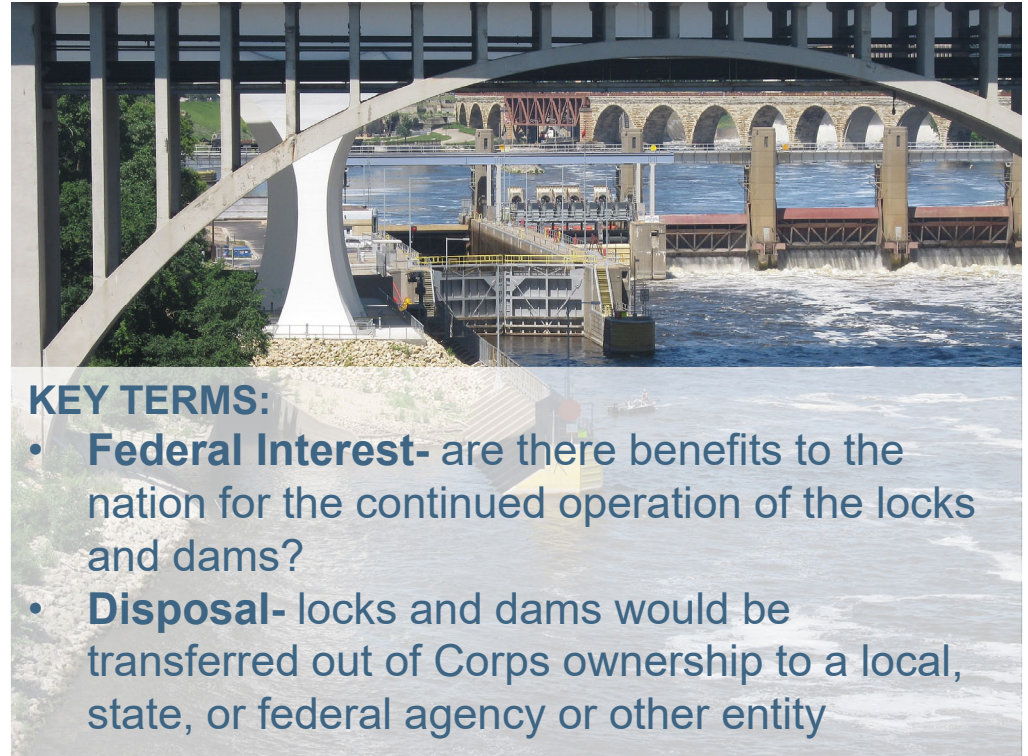
# DISPOSITION STUDY PURPOSE



## Study Must Answer:

Is there Federal interest in continuing to own and operate the sites?

If not, is there a viable disposal alternative?



### KEY TERMS:

- **Federal Interest-** are there benefits to the nation for the continued operation of the locks and dams?
- **Disposal-** locks and dams would be transferred out of Corps ownership to a local, state, or federal agency or other entity





# LOWER ST. ANTHONY FALLS LOCK AND DAM



35W Bridge

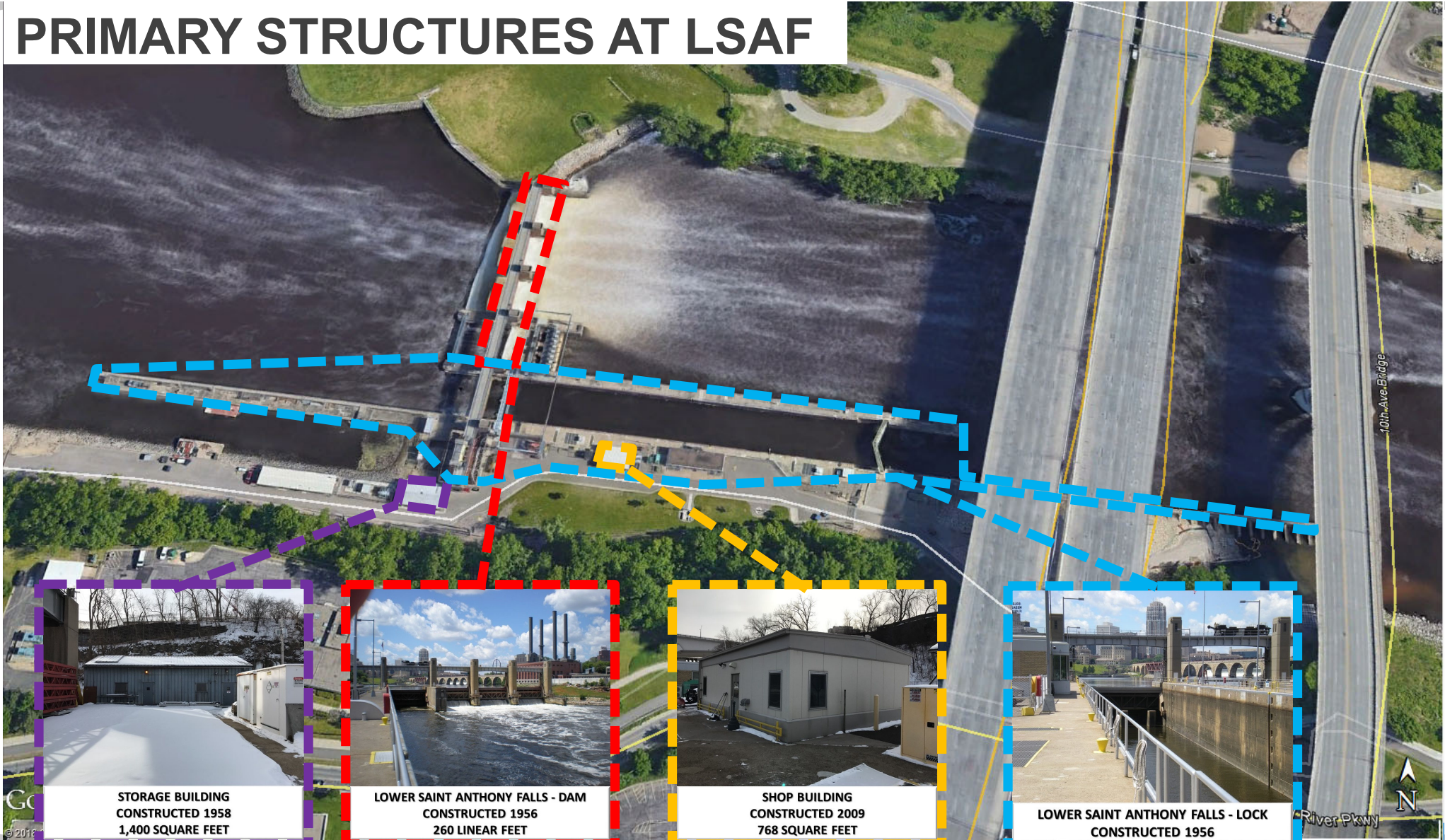
Stone Arch Bridge

LOCK

DAM



# PRIMARY STRUCTURES AT LSAF

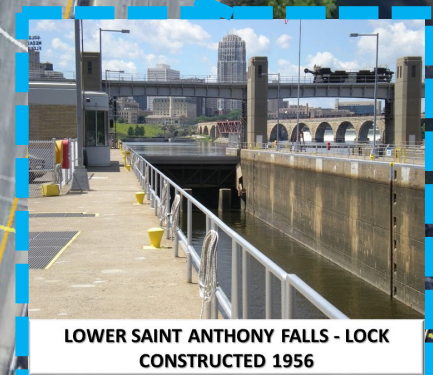
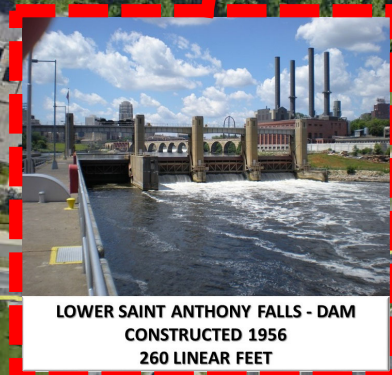
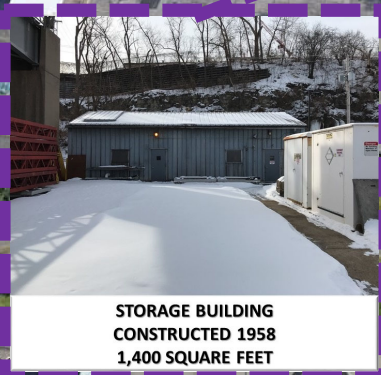


10th-Ave Bridge

River Pkwy

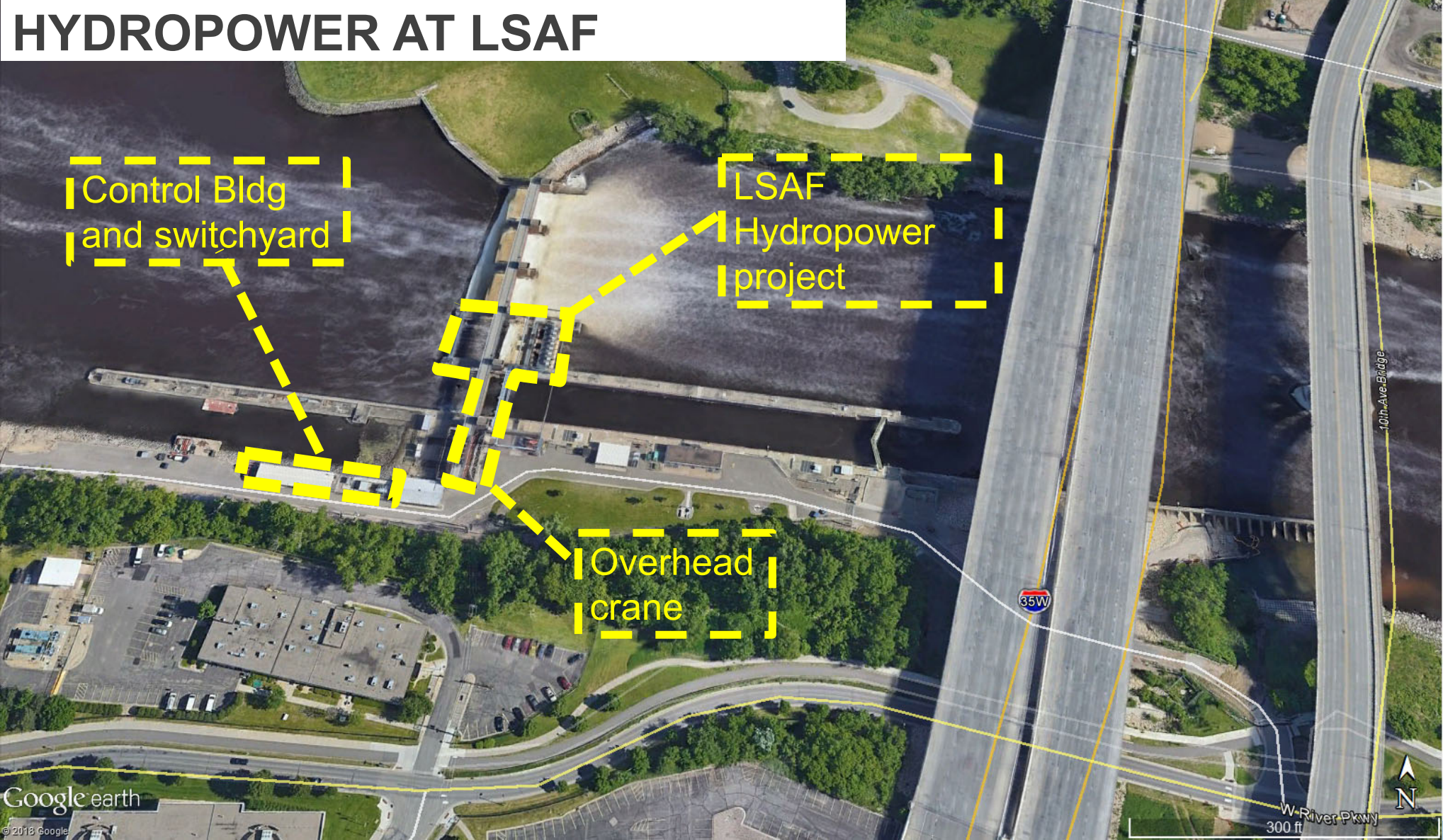


© 2018





# HYDROPOWER AT LSAF







# LSAF STATUS

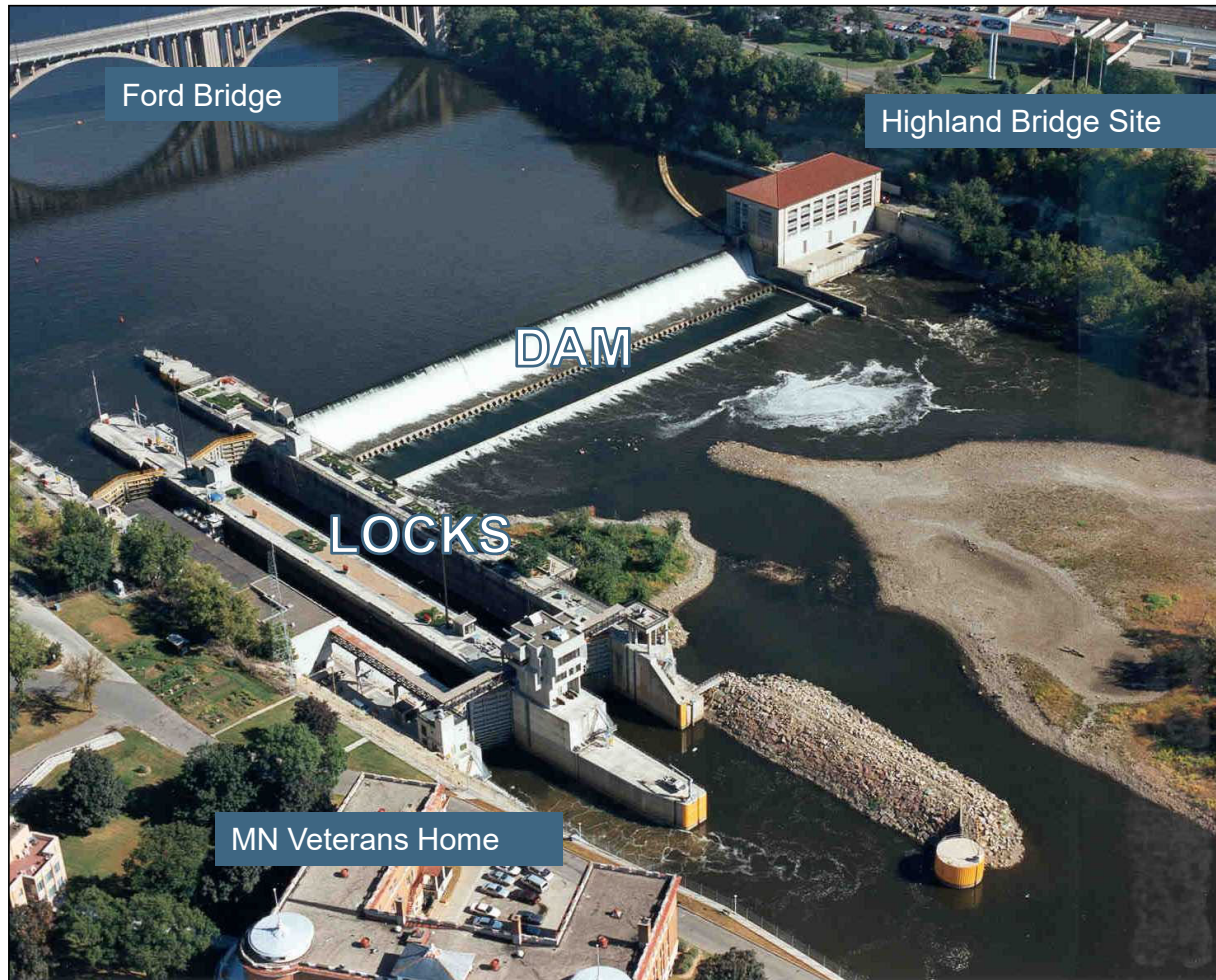


- Open to navigation- primarily recreational users who portage around USAF or commercial passenger boats
- **Corps**
  - Operates dam 24/7
  - Routine maintenance and security





# LOCK AND DAM 1





# PRIMARY STRUCTURES AT LD1



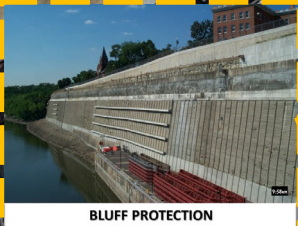
**DAM ENTRANCE BUILDING**  
CONSTRUCTED 1983  
375 SQUARE FEET



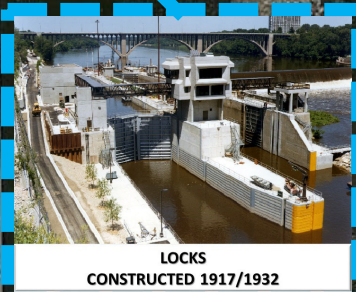
**SERVICE BUILDING**  
CONSTRUCTED 1983  
2560 SQUARE FEET



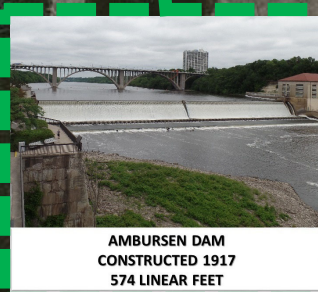
**UTILITY STORAGE BUILDING**  
CONSTRUCTED 1983  
540 SQUARE FEET



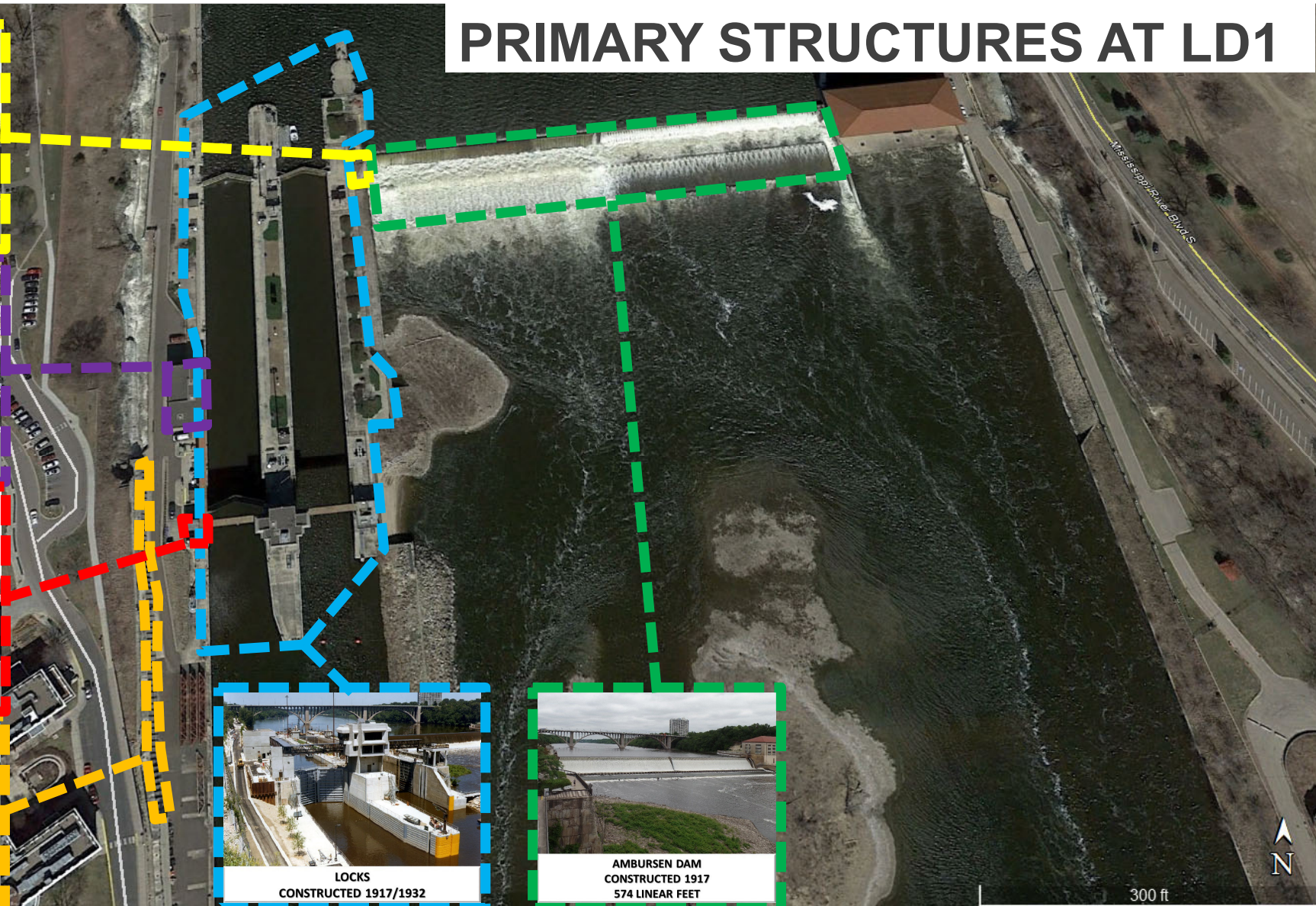
**BLUFF PROTECTION**  
CONSTRUCTED 1964



**LOCKS**  
CONSTRUCTED 1917/1932

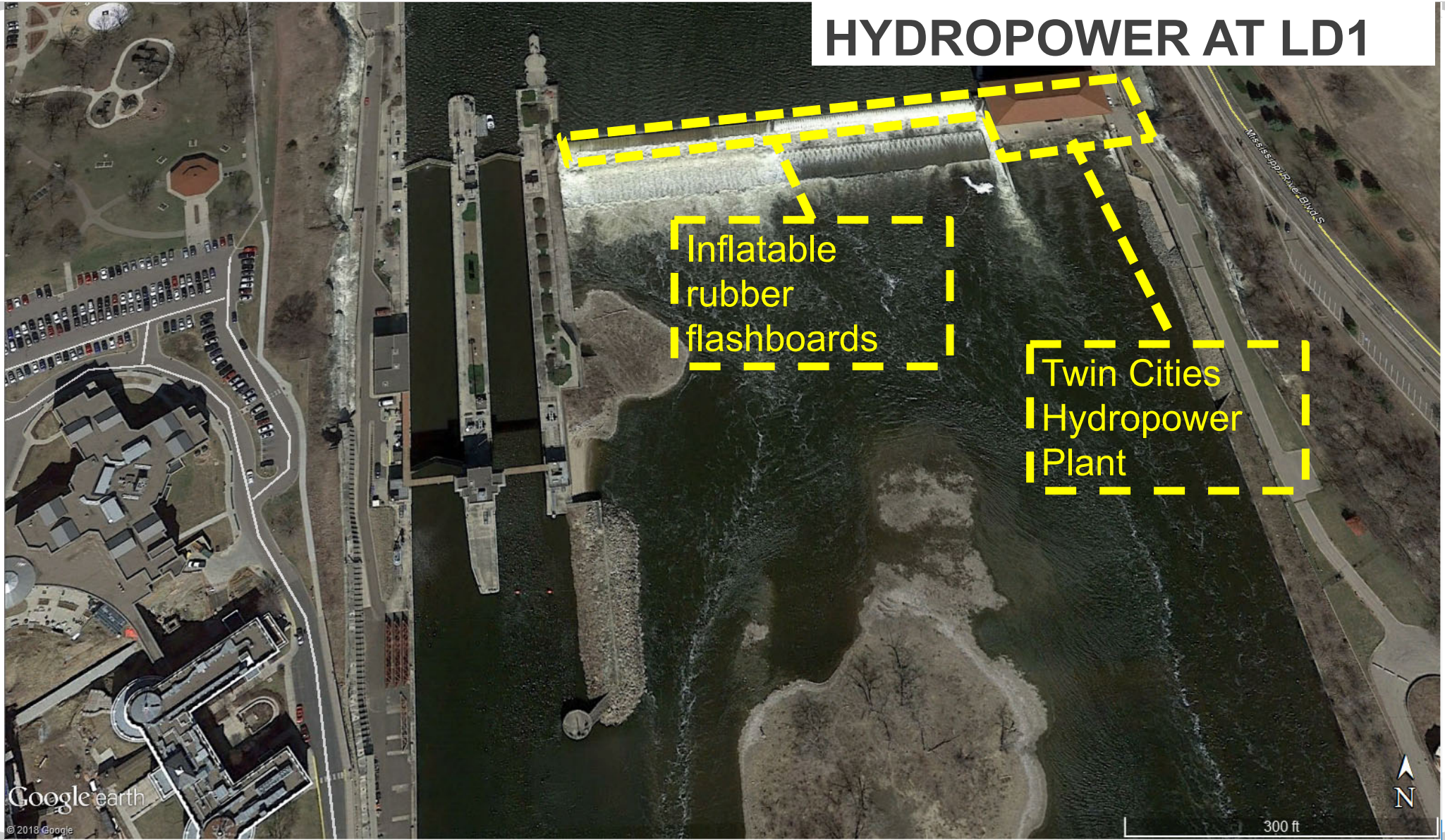


**AMBURSEN DAM**  
CONSTRUCTED 1917  
574 LINEAR FEET





# HYDROPOWER AT LD1



Google earth

© 2018 Google

300 ft







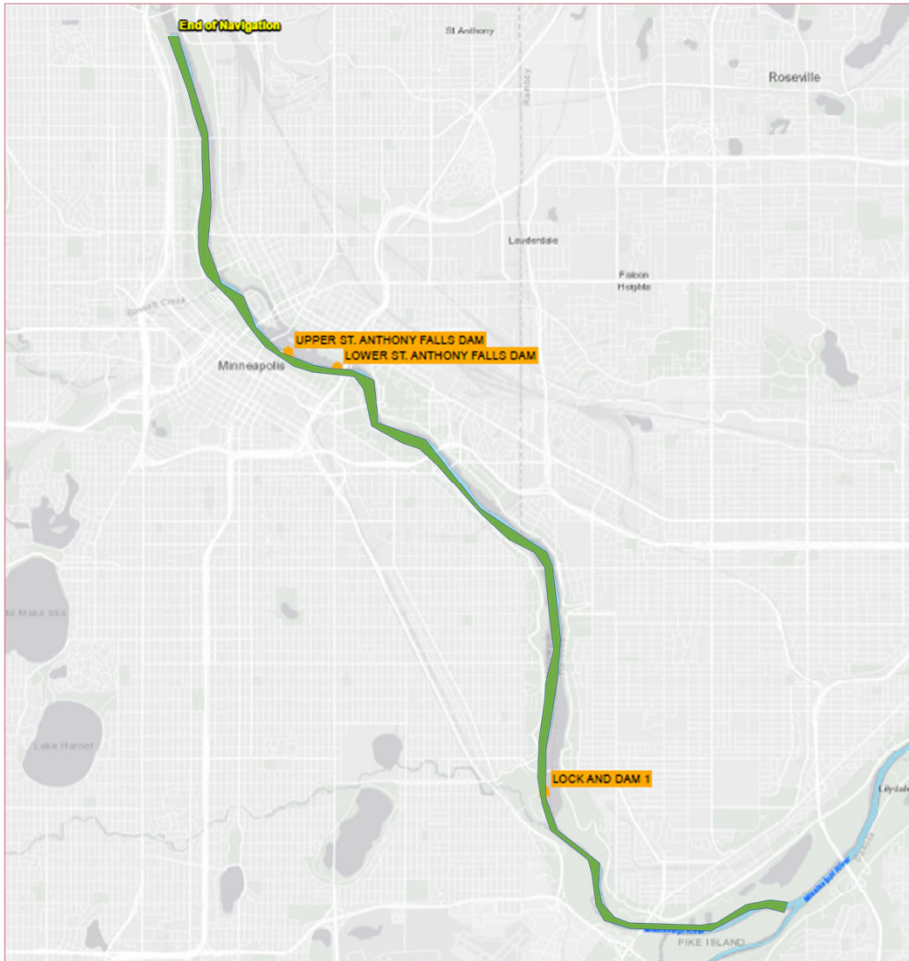
# LOCK AND DAM 1 STATUS



- Open to navigation- users are primarily recreational users or commercial passenger boats
- **Corps**
  - Operates Lock and Dam
  - Routine maintenance and security
  - Dredges pool 1 for navigation (lower priority)



# NAVIGATION CHANNEL



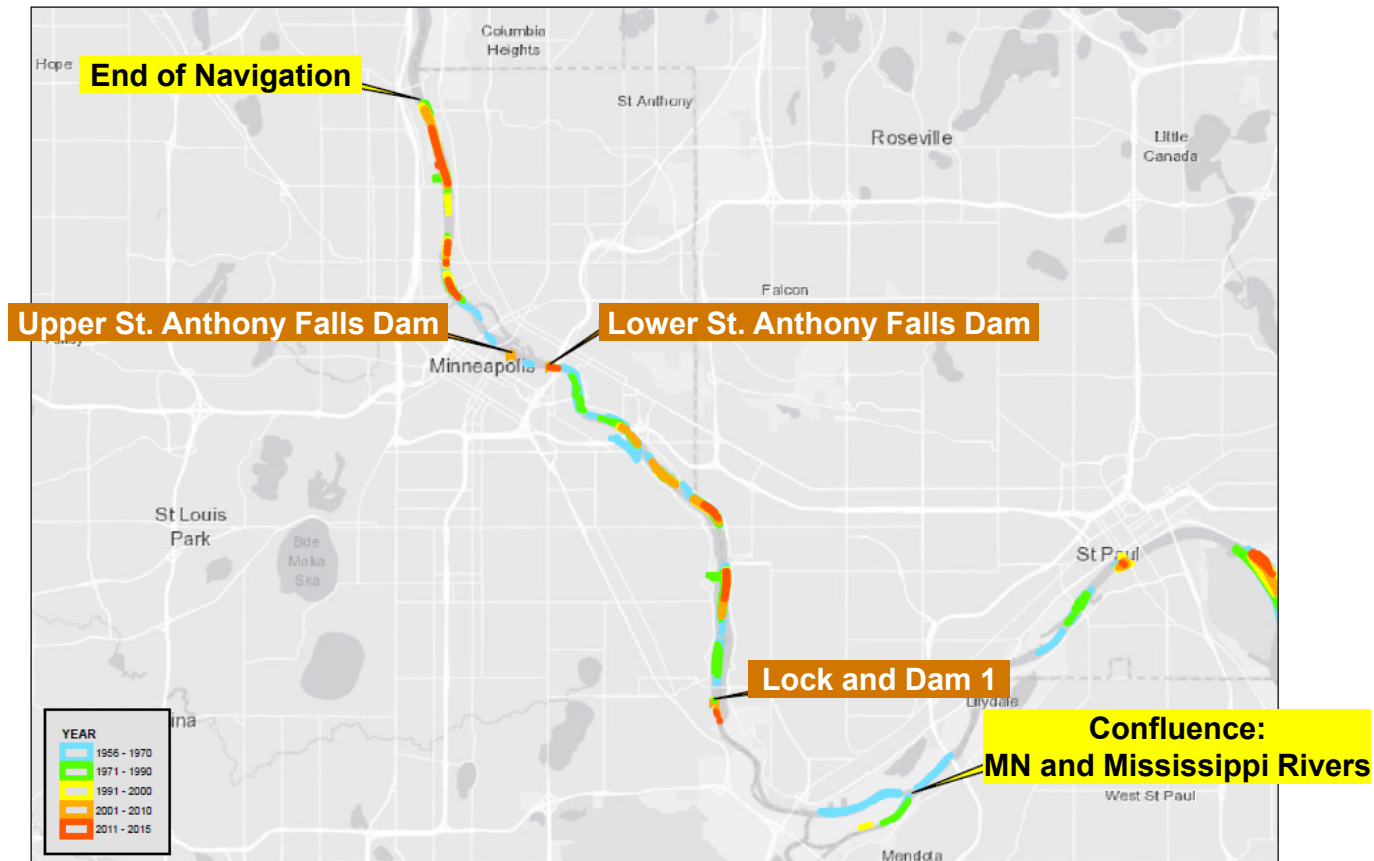
- Maintenance dredging of the nine-foot navigation channel is authorized, historically been required in this area
- Navigation channel is still authorized, but this area is lower priority for maintenance
- Disposition study will evaluate if it is still in the federal interest to maintain the navigation channel
- Study may recommend deauthorization of the navigation channel





# NAVIGATION CHANNEL O & M

## Dredging Activities

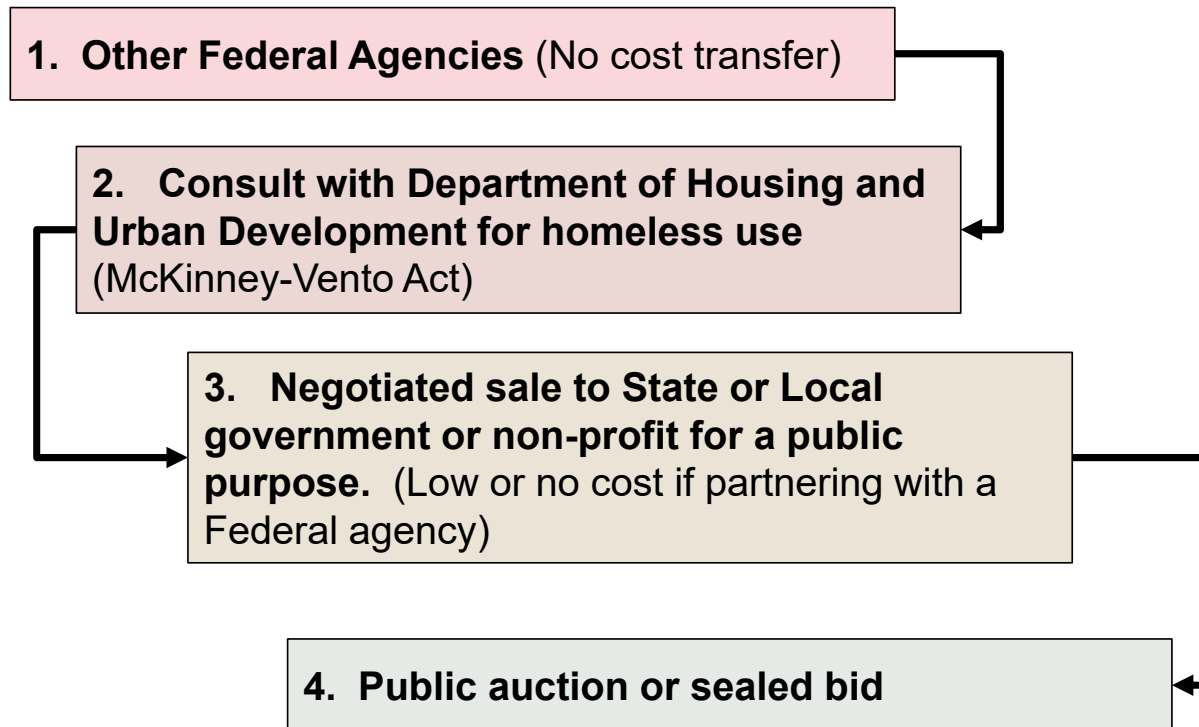




# DISPOSAL OF FEDERAL PROPERTY PROCEDURE



Federal property disposal is carried out by the General Services Administration





# SCOPING



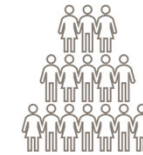
**Public Input**



**Ecological Impacts**



**Tribal Consultation**



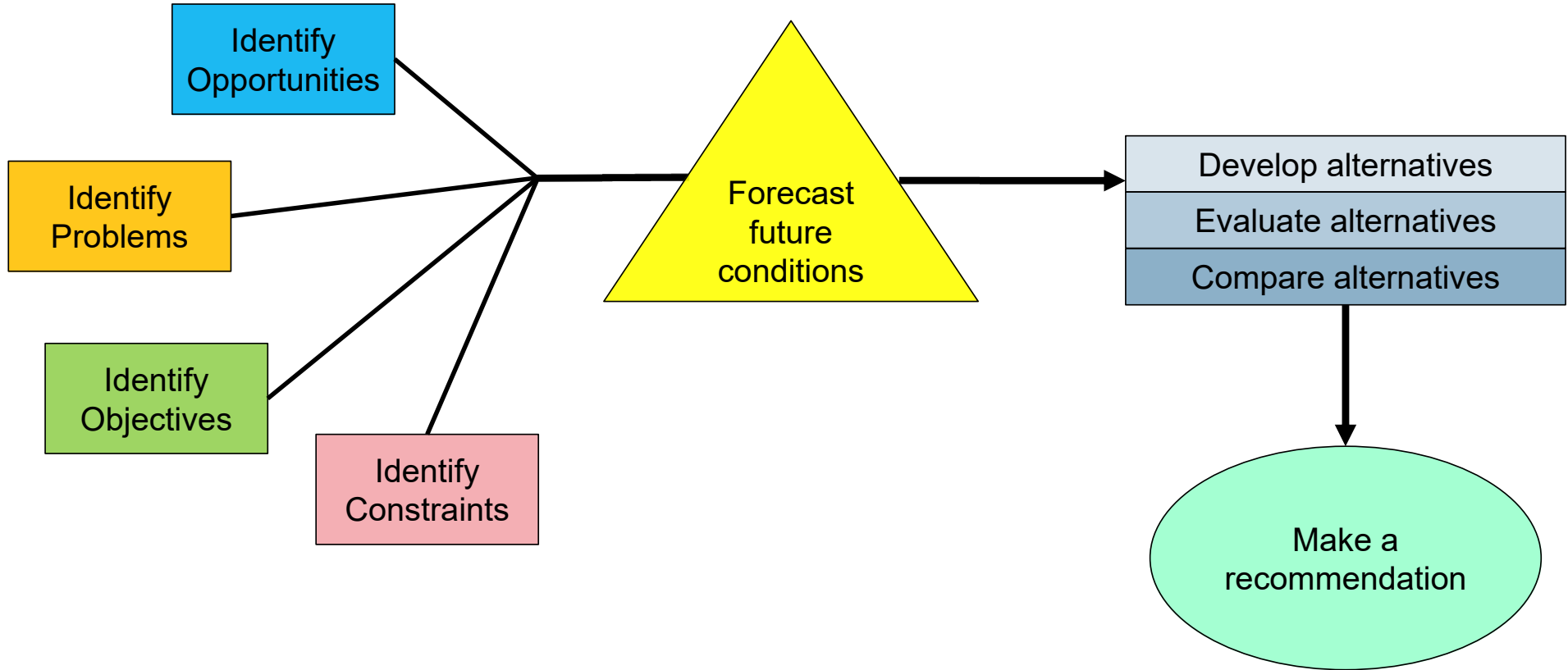
**Social Impacts**



**Economic Impacts**



# THE STUDY PROCESS







## FOCUSED QUESTIONS



1. Does the project meet its authorized purpose?
2. Is there reason to believe the future conditions or needs will be different?
3. Were the alternatives reviewed and considered to inform a Tentatively Selected Plan?
4. What are the economic, environmental and social effects?
5. Does the project pose a risk to public safety?
6. Are there environmental concerns or controversies that will influence the outcome of the study?
7. Is there a stakeholder interested in taking ownership of the project? Does the stakeholder have the financial and legal capacity to assume ownership of the project?
8. What is the level of Congressional interest?
9. What is the Tentatively Selected Plan and why?
10. Are there issues of interest for the Corps leadership to incorporate in to the deauthorization and disposal process?

*Corps Interim Guidance on the Conduct of Disposition Studies, 28 September 2015*



## SCENARIOS

No Action

Full disposal

Partial  
disposal

Modify locks  
& dams

Removal of  
locks &  
dams

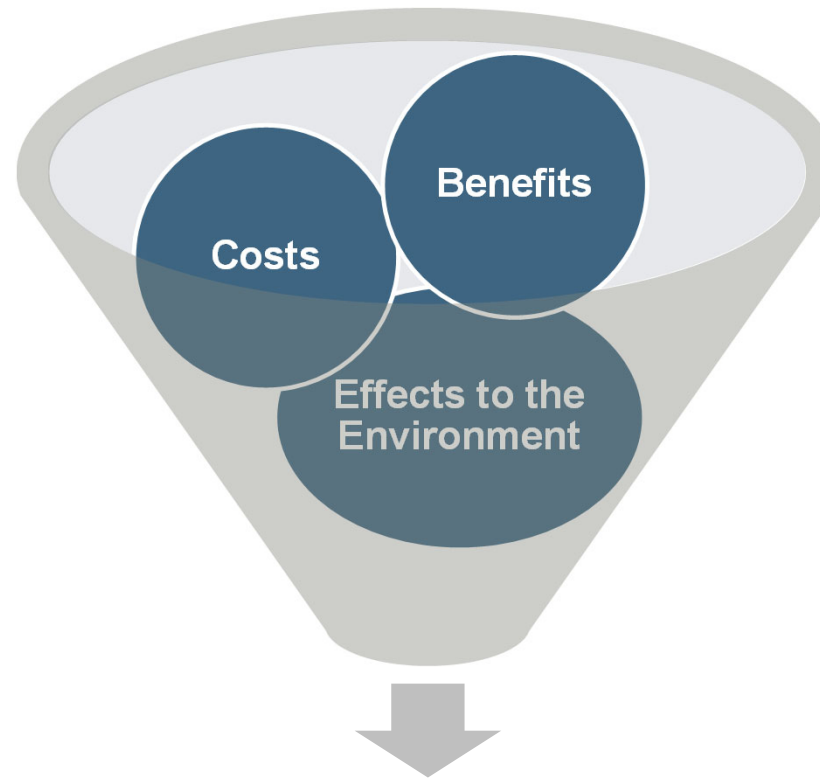
New purpose for  
locks & dam  
(new authorization)

Deauthorize  
Navigation



# EVALUATE SCENARIOS

Evaluate alternatives



Compare alternatives

After gathering input,  
for each alternative we:



# OUTCOME OF STUDY



- After comparing alternatives and evaluating environmental effects the Corps makes a recommendation.
- Recommendation is summarized in a draft report and put it out for public review.
- The input gathered is incorporated and the final report and recommendation is sent to Congress.

**Recommendation to Congress**

**Possible recommendations:**

No Action

Full disposal

Partial disposal

Modify locks & dams

Removal of locks & dams

New purpose for locks & dam

Deauthorize Navigation





# NATIONAL ENVIRONMENTAL POLICY ACT (NEPA)



- Clean Air Act
- Clean Water Act
- Environmental Justice Executive Orders
- Endangered Species Act
- Section 106 of the National Historic Preservation Act
- Contaminated material and substances
- Migratory Bird Treaty Act
- Federal Flood Risk Management Executive Order
- State Environmental Laws
- Local Environmental Laws

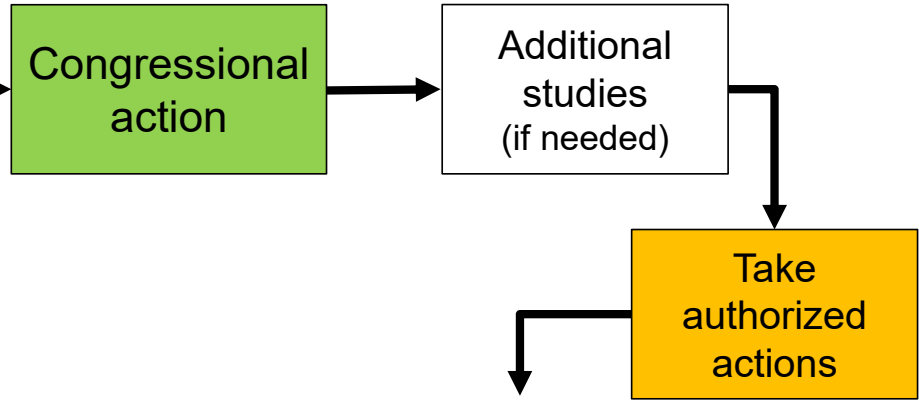
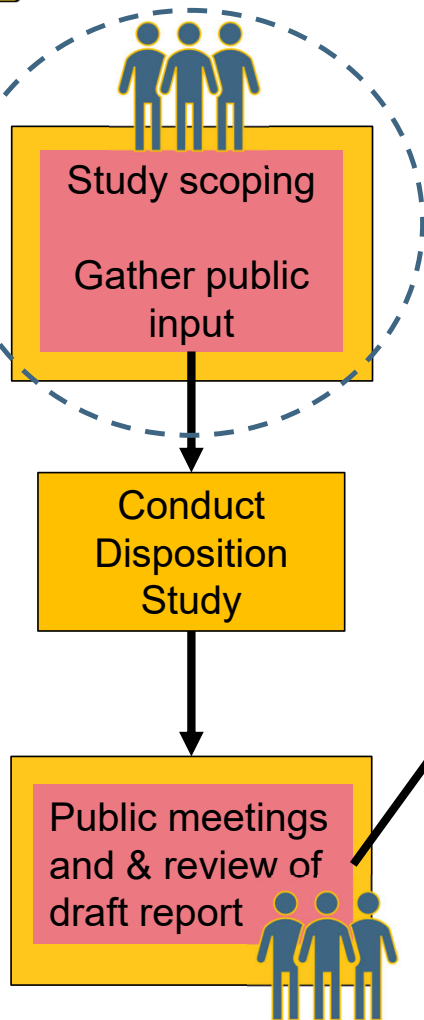
Additional NEPA documents (like an Environmental Impact Statement, or EIS) may be required in the future, depending upon the recommended action, such as:

- Removal or partial removal of the structure
- Alterations/additions to the structure



# NEXT STEPS

- If recommendation is:
- Full or partial disposal
  - Modification to lock & dam
  - Dam removal
  - New purpose for lock & dam



If recommendation is "no action" → End

- Key Public Participation Point
- Corps of Engineers Actions
- Congress Action



# STUDY SCHEDULE



Key Step	Date
Initiate study & Disposition Study Scoping	Fall 2022
Conduct study - Gather public input, collect data	2022 – 2023
Develop draft report with Environmental Assessment	2023
Public meetings, review of draft report	Fall 2024
Comments on draft report due	Winter 2024
Submit final report for approval through Corps	Summer 2025
Congressional Action (if required)	To be determined



Key Public Participation Point



# QUESTIONS





Email questions and comments to:

**[MplsLocksDisposition@usace.army.mil](mailto:MplsLocksDisposition@usace.army.mil)**

Project website:

**[www.mvp.usace.army.mil/MplsLocksDisposition](http://www.mvp.usace.army.mil/MplsLocksDisposition)**